

SPEEDY LASER



Nanjing Speedy Laser Technology Co.,Ltd
Address: 3 Floor 18,19 Building, NO 24 Xuefu Road, Jiangbei New District, Nanjing City,
210031, China.
Tel:+86-025-58842122
Mobile:+86-18651899782
E-mail:gary@speedy-laser.com

南京斯比得激光科技有限公司
地 址：江苏省南京市江北新区学府路24号 联东U谷18栋 19栋3楼
电 话：025-58842122
手 机：18651899782
邮 箱：gary@speedy-laser.com
网 址：www. speedy-laser. com

南京斯比得激光科技有限公司

Nanjing Speedy Laser Technology Co.,Ltd

www.speedy-laser.com

CONTENTS | 目录

1. ABOUT US 企业简介	01
2. COMPANY ADVANTAGES 企业优势	03
3. LASER MARKING MACHINE 激光打标机	05
4. LASER CUTTING MACHINE 激光切割机	23
5. LASER WELDING MACHINE 激光焊接机	33

ABOUT US 公司简介



南京斯比得激光科技有限坐落于历史名城江苏-南京高新技术开发区，毗邻上海，交通十分便利。是一家专业从事激光加工设备研制、销售的高新技术企业。公司产品包括各类激光打标机、激光切割机、激光焊接机等各类工业加工设备。

公司坚持以质量为中心，以服务为导向，遵循ISO9001:2008质量体系，精心打造、细心呵护每一套产品，每一款设备在出厂前需经严格的检测和测试。公司销售服务网络遍及全国各地，在多个大城市设有公司办事处和代理商，提供产品咨询、技术支持、维修服务和销售。产品远销南美、欧洲、俄罗斯、亚洲、中东等国家。为每一位用户提供及时周到的售前、售中和售后服务。

“科技缔造完美，激光改变世界”斯比得激光将一如既往地以高标准来要求自身，充分利用深厚的专业知识与管理经验，不断研制、开发新产品为激光加工领域提供一流的解决方案！我们的目标是向用户提供高质量的产品和最好的服务！



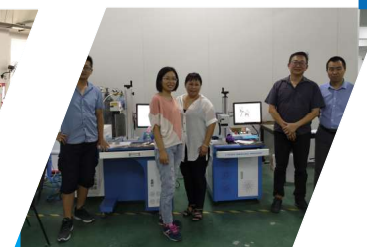
Nanjing Speedy Laser Technology Co.,Ltd,professional laser machine manufacturer in China over 15 years. Our products including laser marking machine, laser cutting machine, laser welding machine and other industrial processing equipment.

“Quality oriented, Service foremost”, our company follow ISO 9001:2008 quality system strictly, manufacturers each of our products elaborately, endeavors to lead Chinese laser system development with good quality, competitive price and top service. Every machine should subject to rigorous testing before shipment. Service can be available in 24 hours. We have corporate offices and agents in many large cities, provide counseling service ,technical support, maintenance services and sales. Our products has been exported to South America, Europe, Russia, Asia, the Middle East and other countries. Provide timely and thoughtful pre-sale for every user, sales and after-sales service.

“Technology create perfect, Laser change world”. Speedy Laser will continue to make full deep expertise and management experience, continuous research and development new products, provide excellent solutions for laser processing field! Our goal is provide high-quality products and best service to all of our customers!

Company Advantages

Work shop 车间



GLOBAL CUSTOMER 客户案例

便携式光纤激光打标机 *Fiber Laser Marking Machine*

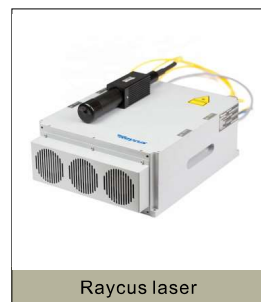


▲ SL-FM20W/30W/50W/60W

技术参数 *Technical Parameter*

Item Name	技术参数 Technical Parameters			
型号 Model	SL-FM 20W	SL-FM 30W	SL-FM 50W	SL-FM 60W
功率 Laser Power	20W	30W	50W	60W
波长 Laser Wavelength	1064nm			
激光器 Laser Type	Raycus/JPT/Max/IPG laser			
单脉冲能量 Pulse Energy	0.67mJ	0.75mJ	1mJ	1.5mJ
频率 Repeat Frequency	30-60kHz	30-60kHz	50-100kHz	1-4000kHz
脉宽 Pulse Width	110-140ns	110-130ns	120-150ns	2-500ns
打标速度 Marking Speed	≤7000mm/s	≤7000mm/s	≤7000mm/s	≤7000mm/s
打标区域 Marking Area	110X110mm/175x175mm/200x200mm/300x300mm			
功耗 Power Consumption	500W	600W	800W	1000W
工作电压 Operating Voltage	110-240V/50-60Hz/15A			
冷却方式 Cooling	Air cooling			
包装尺寸 Package Size	88x42x80cm			
毛重 Gross Weight	60kgs			
工作温度 Working temperature	0-40 °C			

激光器种类 *Laser Source Brand*



Raycus laser



JPT laser



IPG laser

应用领域 *Application*

光纤激光打标机应用范围广泛，主要用于各种金属和大多数塑料。特别适用于五金工具，厨具刀，塑料封条产品，金属饰品，标签，集成电路，框架，水暖配件等产品的打标。

Fiber laser marking machine wide range application, mainly for all kinds of metal and most plastic. Especially suitable for hardware tools, kitchenware knives, plastic seals products, metal jewelry, label, integrate circuits, frames, plumbing fittings and other products marking.

可选配件 *Optional Device*



▲ Size: D65



▲ Size:D80



▲ 2D working table

打标样品 *Marking Samples*



珠宝激光打标机 Jewelry Fiber Laser Marking Machine



▲ SL-FJ30W/50W/60W/100W

可选机型 Machine Model Optional



▲ SL-FC 60W



▲ SL-FS-A 50W

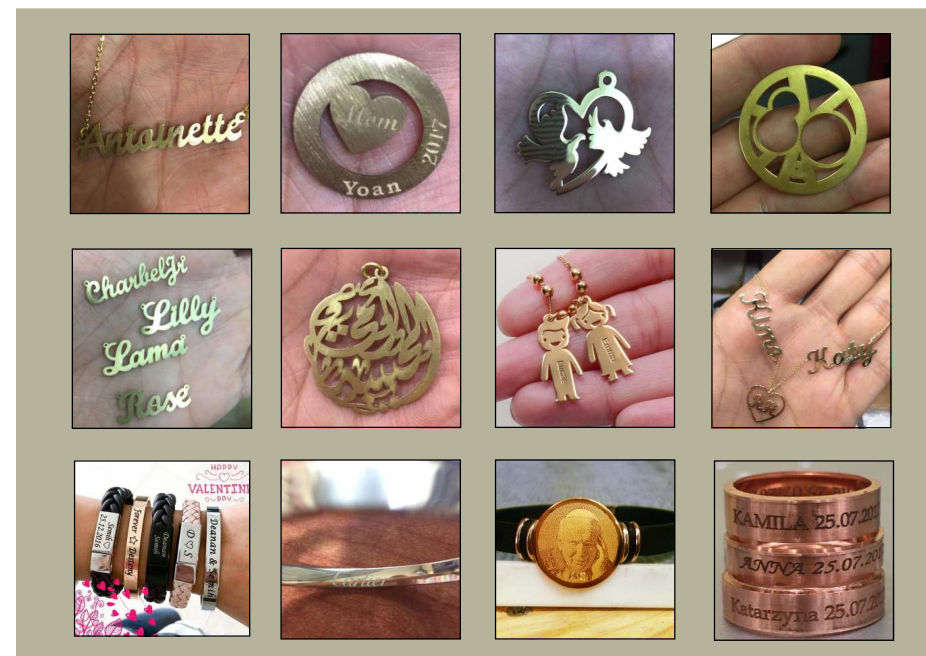


▲ SL-FS 100W

技术参数 Technical Parameter

Item Name	技术参数 Technical Parameters			
型号 Model	SL-FJ 30W	SL-FJ 50W	SL-FJ 60W	SL-FJ 100W
功率 Laser power	30W	50W	60W	100W
波长 Laser wavelength	1064nm			
激光器 Laser type	Raycus/JPT/Max/IPG laser			
单脉冲能量 Pulse Energy	0.75mJ	1mJ	1.5mJ	1.5mJ
频率 Repeat frequency	30-60kHz	50-100kHz	1-4000kHz	1-4000kHz
脉宽 Pulse width	110-130ns	120-150ns	2-500ns	2-500ns
打标速度 Marking Speed	≤7000mm/s	≤7000mm/s	≤7000m/s	≤7000mm/s
打标区域 Marking area	110X110mm/175x175mm/200x200mm/300x300mm			
功耗 Power consumption	600W	800W	1000W	1200W
工作电压 Operating voltage	110-240V/50-60Hz/15A			
冷却方式 Cooling	Air cooling			
包装尺寸 Package size	88x42x80cm			
毛重 Gross weight	62kgs			
工作温度 Working temperature	0-40 °C			

打标.切割样品 Marking/Cutting Samples



桌面式光纤激光打标机 *Fiber Laser Marking Machine*



▲ SL-FC20W/30W/50W/60W/80W/100W



▲ SL-FL50W/60W

技术参数 *Technical Parameter*

Item Name	技术参数 Technical Parameters			
型号 Model	SL-FC 20W	SL-FC 30W	SL-FC 50W	SL-FC 60W
功率 Laser power	20W	30W	50W	60W
波长 Laser wavelength	1064nm			
激光器 Laser type	Raycus/JPT/Max/IPG laser			
单脉冲能量 Pulse Energy	0.67mJ	0.75mJ	1mJ	1.5mJ
频率 Repeat frequency	30-60kHz	30-60kHz	50-100kHz	1-4000kHz
脉宽 Pulse width	110-130ns	120-150ns	2-500ns	2-500ns
打标速度 Marking Speed	≤7000mm/s	≤7000mm/s	≤7000mm/s	≤7000mm/s
打标区域 Marking area	110X110mm/175x175mm/200x200mm/300x300mm			
功耗 Power consumption	500W	600W	800W	1000W
工作电压 Operating voltage	110-240V/50-60Hz/15A			
冷却方式 Cooling	Air cooling			
包装尺寸 Package size	88x73x108cm			
毛重 Gross weight	120kgs			
工作温度 Working temperature	0-40℃			

机器介绍 *Machine Introduction*

- 1). 光纤激光器, 增强稳定性和激光器寿命70000小时。
- 2). 无需进行任何维护, 使用寿命长, 体积小、适用于恶劣环境工作。
- 3). 加工速度快, 是传统打标机的2-3倍。
- 4). 电光转换效率高, 整机耗电不到500W, 大大节省能耗支出。
- 5). 光束质量比传统的固体激光打标机好很多, 特别适用于精细、精密打标。

- 1). Adopt professional China Raycus / Max / Germany IPG laser source.
- 2). Application industry: all metal objects and some plastic objects.
- 3). Fast delivery time, standard machine have stock.
- 4). Genuine EZCAD software with warranty period 3 years.
- 5). All our machine pass CE, FDA Certificate.

可选机型 *Machine Model Optional*



▲ SL-FH 20W/30W/50W



▲ SL-FP 20W/30W/50W

打标样品 *Marking Samples*





▲ SL-MP20W/30W/60W/80W

技术参数 Technical Parameter

Item Name	技术参数 Technical Parameters			
型号 Model	SL-MP 20W	SL-MP 30W	SL-MP 60W	SL-MP 80W
功率 Laser power	20W	30W	60W	80W
波长 Laser wavelength	1064nm			
激光器 Laser type	JPT MOPA M7 laser			
单脉冲能量 Pulse Energy	0.8mJ	0.8mJ	1.5mJ	2.0mJ
频率 Repeat frequency	1-4000kHz	1-4000kHz	1-4000kHz	1-4000kHz
脉宽 Pulse width	2-350ns	2-350ns	2-500ns	2-500ns
打标速度 Marking Speed	≤7000mm/s	≤7000mm/s	≤7000mm/s	≤7000mm/s
打标区域 Marking area	110X110mm/175x175mm/200x200mm/300x300mm			
功耗 Power consumption	500W	600W	800W	1000W
工作电压 Operating voltage	110-240V/50-60Hz/15A			
冷却方式 Cooling	Air cooling			
包装尺寸 Package size	88x42x80cm			
毛重 Gross weight	60kgs/130kgs			
工作温度 Working temperature	0-40 °C			

机器介绍 Machine Introduction

SL-MP系列MOPA激光打标机采用直接电调制半导体激光器作为种子源(MOPA)方案的高功率光纤激光器, 具有完美的激光特性和良好的脉冲形状控制能力。与调Q光纤激光器相比, MOPA光纤激光器脉冲频率和脉冲宽度是独立可控的, 通过两项激光参数调整搭配, 可实现恒定的高峰值功率输出以及能适用于更广泛的标刻基材。此外, 把调Q激光器的不可能变成MOPA的可能, 更高的输出功率使其在高速打标的应用中优势尤为突出。

SL-MP series pulsed fiber lasers make use of master oscillator power amplifier(MOPA) configuration, and show excellent laser performance as well as high level of temporal pulse shaping controllability. As compared to the Q-switching technology, the pulse repetition frequency(PRF) and pulse width can be controlled independently in MOPA configuration, while the peak power of the fiber laser can be well maintained. The feature is crucial for material processing applications, such a laser marking. Besides, its good pulse width turn ability enables minimum pulses deformation, increases the thresholds of nonlinearities, and hence makes the laser more reliable and robust.

设备特征 Equipment Features

- 1). 金属表面处理, 剥落涂层;
 - 2). 氧化铝打黑;
 - 3). 半导体和电子行业的应用;
 - 4). 在塑料或其他敏感材料上具有出色的标记效果;
 - 5). 不锈钢上的彩色标记。
- 1). Metal surface processing, peeling coating
 - 2). Oxide aluminum black marking
 - 3). Semi-conductor & electronics industry applications
 - 4). Excellent marking effect on plastic or other sensitive material
 - 5). Colorful marking on stainless steel

打标样品 Marking Samples





▲ SL-FD 50W / 60W / 100W

技术参数 Technical Parameter

Item Name	技术参数 Technical Parameters		
型号 Model	SL-FD 50W	SL-FD 60W	SL-FD 100W
功率 Laser power	50W	60W	100W
波长 Laser wavelength	1064nm/355nm		
激光器 Laser type	Fiber laser/UV laser/CO2 laser		
打标深度 Marking Depth	0.1-1mm		
工作电压 Operating voltage	110-240V/50-60Hz/15A		
冷却方式 Cooling	Air cooling/Water Cooling		
工作温度 Working temperature	0-30 degree		
打标区域 Marking area	200x200mm/600x600mm		
打标软件 Marking Software	Lenmark		
质保 Warranty	1.5years -2 years		

机器介绍 Machine Introduction

3D激光打标机采用进口核心器件，配置高速、高精度3D动态聚焦扫描振镜，可根据客户需求，配置不同尺寸、不同功率登记、不同波长激光器，主要应用曲面、大幅面、曲面深雕。与传统2D激光标机相比，3D打标对加工对象的表面平整度要求已经大幅度降低，可加工的效果更丰富多彩，更多的有创意的加工工艺应运而生。

3D laser marking machine adopts imported core components, equipped with high-speed, high-precision 3D dynamic focus galvo scanner. according to customer needs, it can be equipped with different sizes laser, different laser power, different wavelength laser source. It is mainly used for curved, big marking size, and curved deep marking. Compared with traditional 2D laser marking, 3D marking has greatly reduced the surface flatness requirements of the processed object.

设备特征 Equipment Features

- 1) 曲面打标 (可在异形曲面物件上进行精准标刻，效果均匀完美不变形)。
- 2) 大幅面打标 (可针对大尺寸物体进行大幅面标刻，每个点位置能量均衡，效果无色差)
- 3) 曲面深雕 (可针对曲面进行深度雕刻，底部均匀，整体效果一致)
- 4) 三轴动态系统 (采用菲雷泰克3D打标软件，功能强大，界面人性化，操作简单)

- 1). Curve marking (marking special-shaped curved objects, perfect marking without deformation)
- 2). Large-size marking (large-size objects marking, the energy of each point position is balanced.)
- 3). Deep curve marking (deep carving for the curved surface, the overall effect is consistent)
- 4). Three-axis dynamic system (Feeltek 3D marking software, powerful functions, user-friendly interface, simple operation)

应用 Applied Materials

曲面打标，浮雕，清洗，模具纹理，表面处理。

3D surface marking, Engraving, Cleaning, Mould Texture, Surface Treatment.

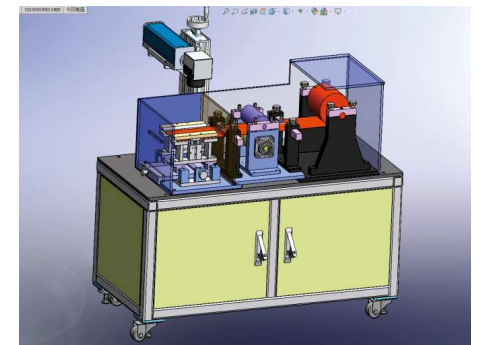
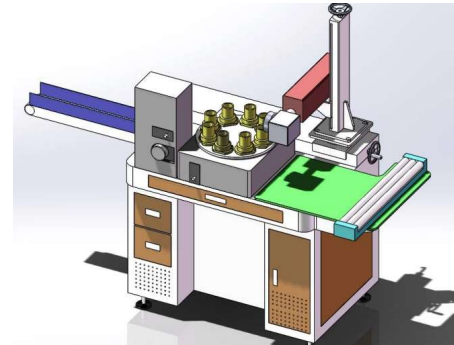
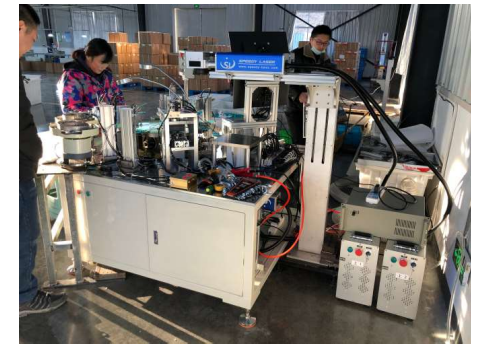
打标样品 Marking Samples



非标激光打标机 *Customized Laser Marking Machine*

我公司承继各类非标自动化激光打标机，可根据客户需求，为客户量身定制一整套打标系统和工装夹具，真正的实现工厂无人化运作，提高激光打标效率，相比传统加工可以增加30%以上的工作效率。

Our company accept customized laser marking machines, design and develop automatic laser marking machines according to customer needs, special-purpose laser marking machine, improve the marking efficiency of laser marking.





▲ SLP-UV 3W

▲ SL-UV 3W/5W

▲ SLF-UV 5W/10W

技术参数 Technical Parameter

Item Name	技术参数 Technical Parameters		
型号 Model	SL-UV 3W	SL-UV 5W	SL-UV 10W
功率 Laser power	3W@40kHz	5W@40kHz	10W@40kHz
波长 Laser wavelength	355nm		
激光器 Laser type	UV laser source		
光斑直径 Beam diameter	≤10mm		
频率 Repeat frequency	20-200KHz	20-200KHz	20-200KHz
脉宽 Pulse width	<20ns@40kHz	<20ns@40kHz	<18ns@40kHz
波束稳定性 Beam Stability	< 25μrad		
环境温度 Ambient temperature	10-35 °C		
功耗 Related power	800W	1000W	1500W
电压 Operating voltage	110V- 240V/50-60Hz/15A		
冷却方式 Cooling	Air cooling/ Water cooling		
包装尺寸 Package size	1050*1100*1200mm(L*W*H)		
毛重 Gross weight	180kgs		
包装 Package	Wooden case		

机器介绍 Machine Introduction

低功率 UV激光器 (3W / 5W / 10W) 具有结构紧凑, 安装和调试极为方便的特点。他们采用了内置的激光二极管技术, 以避免光纤抖动对输出激光器的影响。此外, 光束质量极佳, 足以确保批量生产的稳定性和可靠性, 可以满足苛刻的工业工作条件下特殊的制造和加工需求。

Low Power DPSS UV Laser (3W/5W/10W) is featured with compact structure with extremely convenient installation and debugging. They have adopted the built-in laser diode technology to avoid the effect of fiber shaking on output laser. Besides, the beam quality is excellent enough to ensure the stability and reliability for mass production, which can meet the special manufacturing and processing demand in harsh industrial working condition.

设备特征 Equipment Features

(1) 稳定的功率输出和脉冲宽度; (2) 优异的光束质量, $M^2 < 1.2$; (3) 高光束指向稳定性; (4) 重复频率范围宽: 20-200kHz; (5) 可通过RS232接口控制; (6) 独特的腔内倍频技术; (7) 可触发的外部。

- Stable output of power and pulse width.
- Excellent beam quality, $M^2 < 1.2$.
- High beam pointing stability.
- Wide repetition rate range: 20-200kHz.
- Controllable with RS232 interface.
- Unique Intracavity frequency doubling technology.
- Triggerable external.

打标样品 Marking Samples





▲ SL-EP 10W/20W

技术参数 Technical Parameter

Item Name	技术参数 Technical Parameters	
型号 Model	SL-EP 10W	SL-EP 20W
功率 Laser power	10W	20W
波长 Laser wavelength	1064nm	
激光器 Laser type	Nd:YVO4 Diode laser	
光斑直径 Beam diameter	10mm+/-1	
频率 Repeat frequency	1-100KHz	1-200KHz
脉宽 Pulse width	≤20ns@20kHz	≤20ns@20kHz
光束质量 Beam quality	M2<1.3	M2<1.3
环境温度 Ambient temperature	10-35 °C	
功耗 Rated power	500W	800W
电压 Operating voltage	110V- 240V/50-60Hz	
冷却方式 Cooling	Air/ Water cooling	Water cooling
工作区域 Working area	110×110mm / 175×175mm/ 300×300mm	

机器介绍 Machine Introduction

端泵水冷激光打标机为我司--南京斯比得激光科技有限公司，秉承德国制造之精髓，生产并销售的高标准激光设备，已为大众所熟知的各行各业提供打标、钻孔、微加工等激光解决方案。设备主要应用于汽车按键镭雕、电工电器、手机通讯、精密器械电子元器件等。

The end-pump water-cooled laser marking machine is our company--Nanjing Speedy Laser Technology Co., Ltd., adhering to the essence of German manufacturing, produces and sells high-standard laser equipment, and has provided marking and drilling for all walks of life well-known to the public. Laser solutions for holes, micromachining, etc. The equipment is mainly used in laser engraving of automobile buttons, electrical appliances, mobile communications, precision equipment and electronic components.

设备特征 Equipment Features

- 1、采用一体化整体结构，配备自动调焦系统，操作过程人性化。
- 2、激光器源于德国技术，自主研发设计，德标百级无尘间，全套德国工艺流程生产。
- 3、激光器光源、控制箱，双重载连接器连接，不易松动，绝接头接触不良隐患，插拔方便。
- 4、无需进行任何维护，使用寿命长，体积小、适用于恶劣环境工作。

1. It adopts an integrated overall structure, equipped with an automatic focusing system, and the operation process is humane.
2. The laser originated from German technology, independent research and development design, German standard 100-class dust-free room, and a complete set of German process production.
3. The laser light source, the control box, and the dual-load connector are connected, which are not easy to loosen, and the connector is not easy to connect. It is easy to plug and unplug.
4. No need for any maintenance, long service life, small size, and suitable for working in harsh environments.

打标样品 Marking Samples



二氧化碳激光打标机 CO₂ Laser Marking Machine



▲ SLP-CO₂ 30W

▲ SLD-CO₂ 60W

▲ SLF-CO₂ 30W

技术参数 Technical Parameter

Item Name	技术参数 Technical Parameters	
型号 Model	SL-CO ₂ 30W	SL-CO ₂ 60W
激光功率 Laser power	30W	60W
波长 Laser wavelength	1064nm	
激光器 Laser type	金属射频激光器 China DAVI RF laser	
最小线宽 Minimum line width	0.02mm	
重复频率 Repeat frequency	20KHz-100KHz	
打标速度 Marking speed	≤7000mm/s	
打标深度 Marking depth	0.01-0.5mm	
打标范围 Marking area	110x110mm/175x175mm/200x200mm	
功耗 Power consumption	600W	800W
图文格式 Graphic format	DXF,PLT,BMP,AI etc	
工作电压 Operating voltage	110V-240V/50-60Hz/15A	
冷却方式 Cooling	Air/water Cooling	
环境温度 Working temperature	0-40 °C	
包装 Package	Standard export Wooden case	

机器介绍 Machine Introduction

CO₂激光打标机采用金属射频激光器和高速振镜扫描仪系统。配备高品质的光学设备，高稳定性的激光发生器，全自动控制系统。该机器系统工作精度高，速度快，性能非常稳定，可以长时间连续工作，并且可以直接用于大量在线加工生产线。

CO₂ laser marking machine adopts America CO₂ RF laser generator and high speed galvo scanner system. With high quality optic devices, high stability laser generator, full automatic control system. The machine system working with high precision and fast speed, very stable performance, can work continuously for a long time and can be applied directly in large quantities of online processing lines.

设备特征 Equipment Features

- 1、激光器系统全封闭，出光稳定，无需调试
 - 2、功耗低，激光器寿命长，功率降低后可充气继续使用
 - 3、软件调整功率，支持PLT、DXF、BMP等文件格式。
 - 4、支持自动编码、跳号、条形码及二维码的打标。
 - 5、金属腔体密封，激光器寿命长达2万小时。
1. DAVI RF metal laser generator, useful life 20,000 hours.
 2. Red light preview, clear marking position.
 3. High speed Galvo scanner, fast speed, high precision, stable function.
 4. Full set imported optic lenses, low consumption, good focus performance.
 5. Automatic number jump and counting function.

打标样品 Marking Samples

